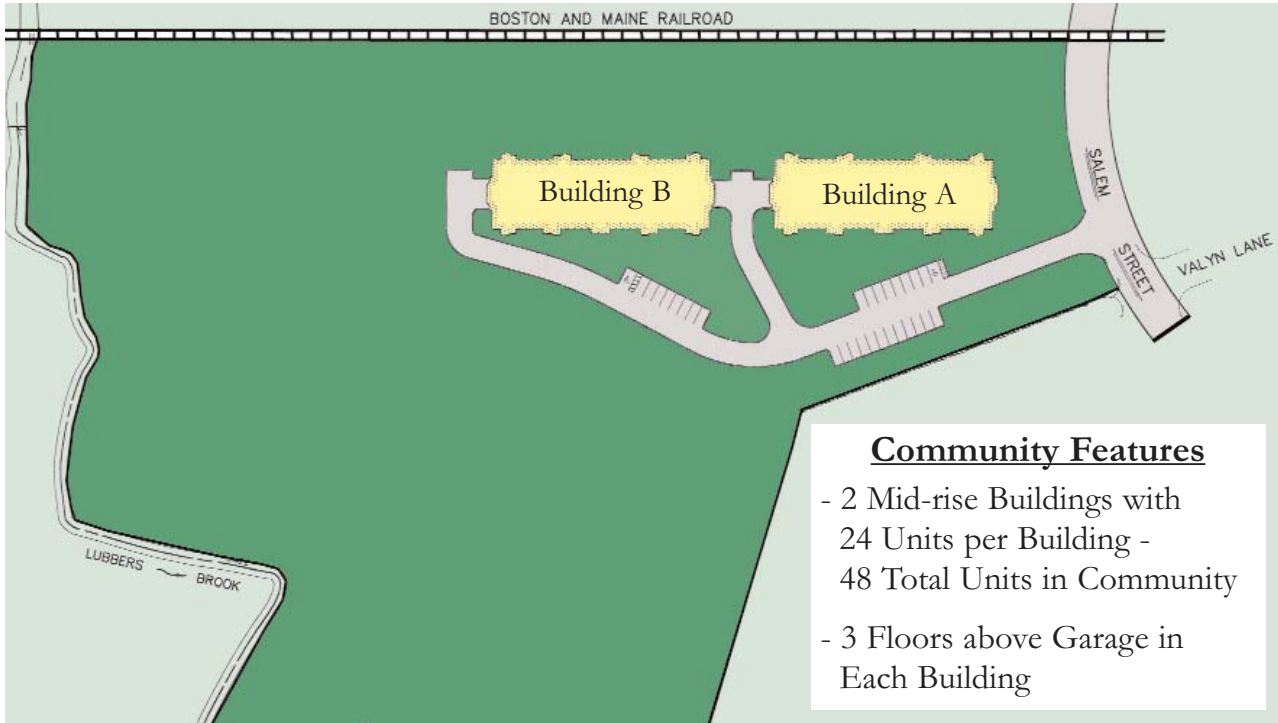


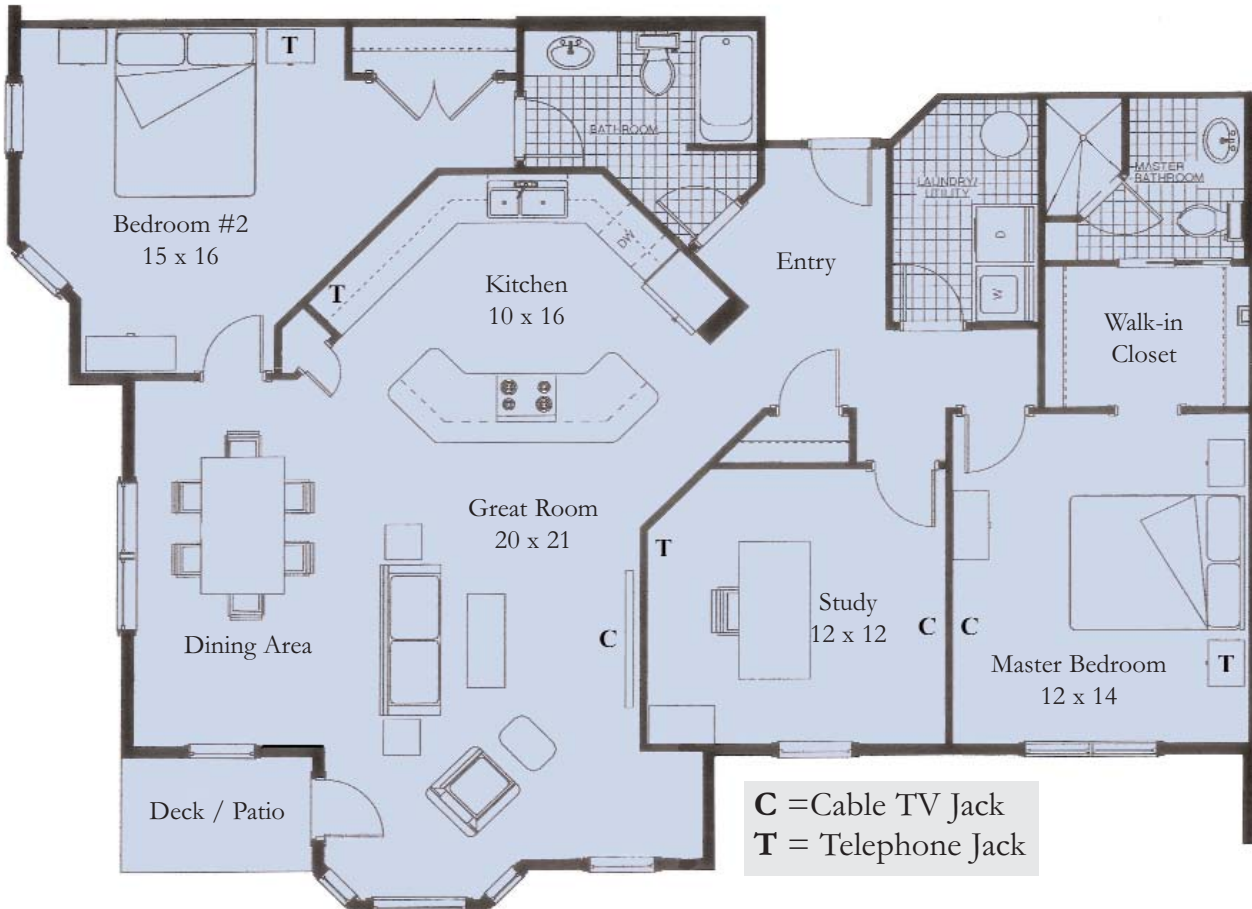
# WHISPERING PINES

## Whispering Pines Site Map - 48 Total Units



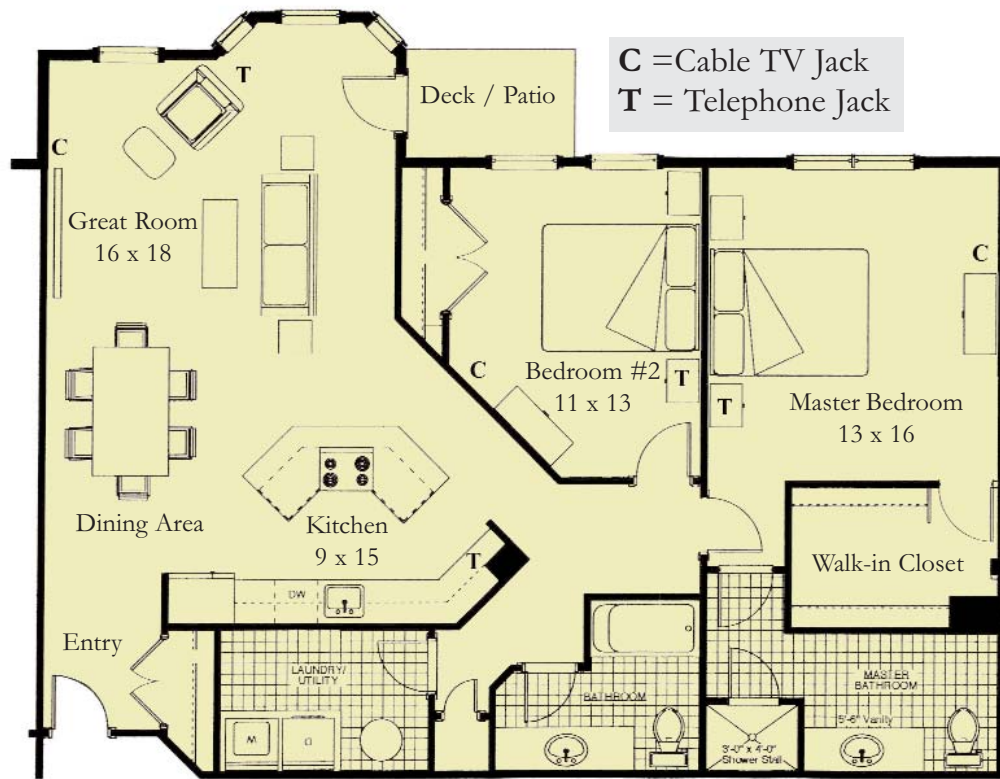
## Floor Plan Options - *MORE ON REVERSE PAGE*

Floor Plan Option A - 1,540sf +/-

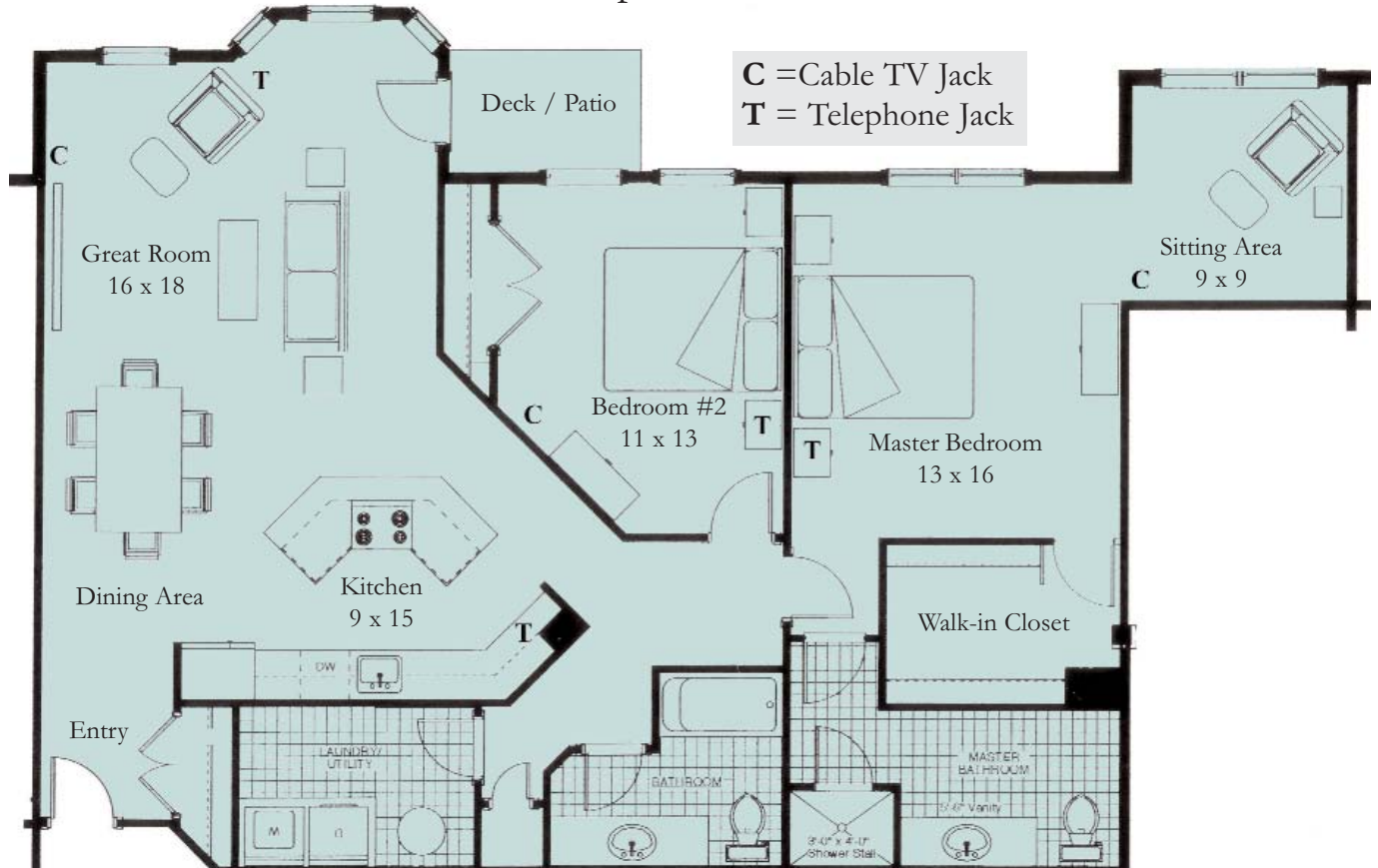


# WHISPERING PINES

Floor Plan Option B - 1,390sf +/-



Floor Plan Option B-1 - 1,471sf +/-



Note: The specifications listed above and in any other descriptive material are, at the current time, expected to be provided; however, the actual specifications will be determined at the Seller's sole discretion and may be modified, including the right to change, adjust and substitute any materials, appliances, components, labor or other items, provided that they are of equal or better quality. Seller expressly reserves the right to change or deviate from the specifications listed in this document. All floor plans, specifications, pricing and other information are subject to change without notice.

Revised 10/1/06 - KJ