

For regulation information, please refer to the NHFGD Freshwater Fishing Digest.

Contact: NHFGD Region 2 (Lakes Region), New Hampton
E-mail: reg2@wildlife.nh.gov Phone: 603-744-5470

WENTWORTH, LAKE Wolfeboro

FISHERY: Warmwater	ACRES: 3097
TROPHIC LEVEL: OLIGO	
AVG DEPTH: 25	MAX DEPTH: 80
SPECIES: RT,SMB,LMB,ECP,HP,WP	
ADDITIONAL INFO:	
ACCESS: Clow Beach cartop launch Wentworth State Park	

Contact NH Dept of Safety, Marine Patrol Bureau for information regarding waterbody restrictions (603) 293-0091

Water Access site (State, Federal, or Road-to-Public-Water)

- Canoe/cartop
- Shorebank
- Ramp

Bathymetric contour (feet)

Bathymetry provided by the NH Department of Environmental Services, Watershed Mgt Bureau

- Town boundary

Primary Route

Road or Street

Trail or other

Stream or Shoreline

Surface Water

Wetland

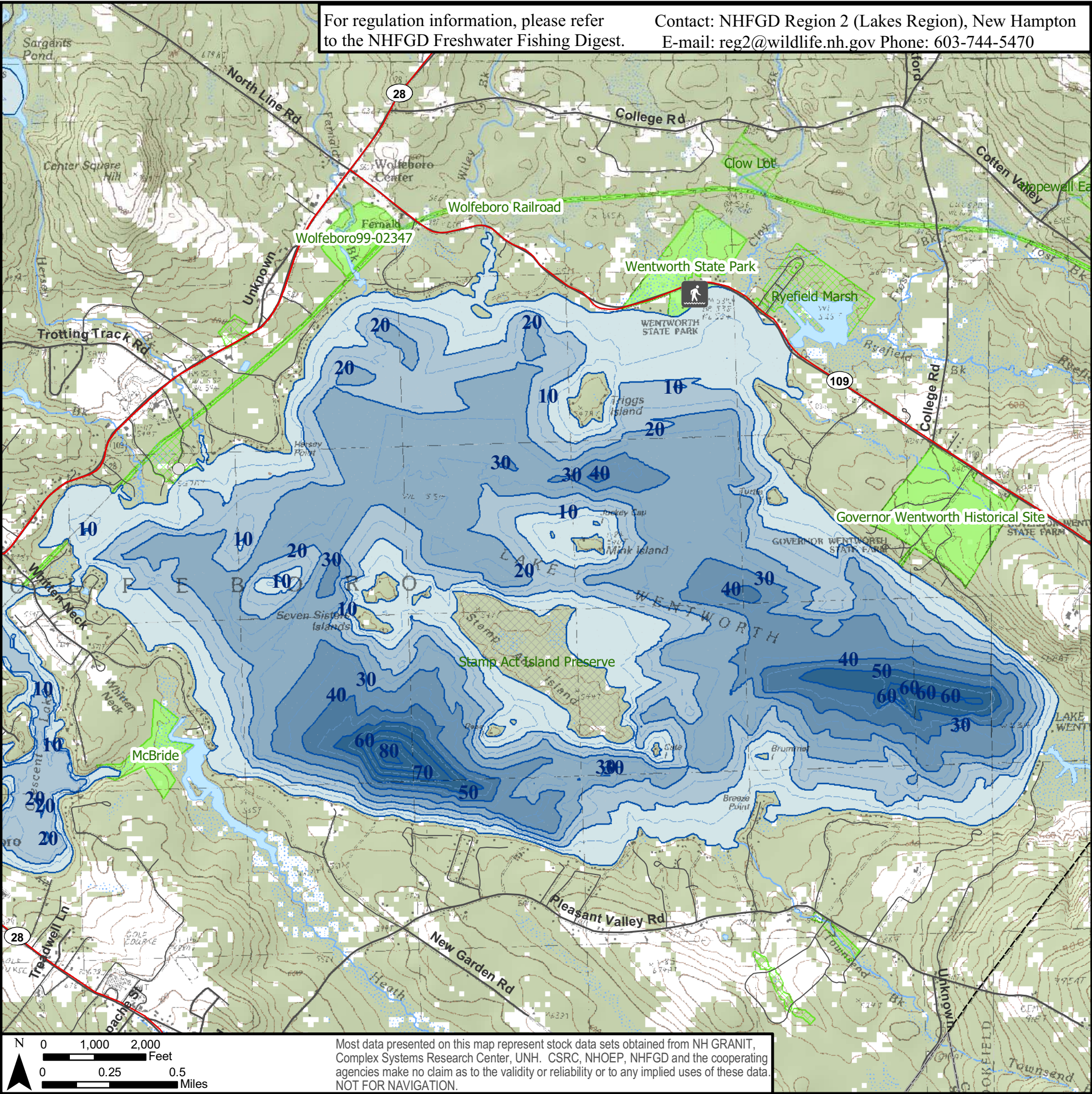
Conservation Land
- Cleared Forest

Contour

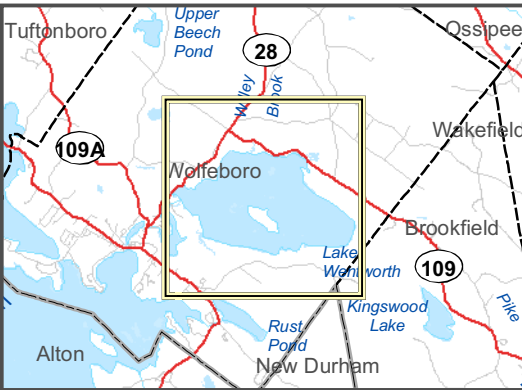
Building

Restricted Access

Conservation
- Source: USGS



Most data presented on this map represent stock data sets obtained from NH GRANIT, Complex Systems Research Center, UNH. CSRC, NHOEP, NHFGD and the cooperating agencies make no claim as to the validity or reliability or to any implied uses of these data. NOT FOR NAVIGATION.



Directions: Rt 109