

For regulation information, please refer to the NHFGD Freshwater Fishing Digest.

Contact: NHFGD Region 2 (Lakes Region), New Hampton
E-mail: reg2@wildlife.nh.gov Phone: 603-744-5470

WAKONDAH POND Moultonborough

FISHERY: Warmwater **ACRES:** 92
TROPHIC LEVEL: MESO
AVG DEPTH: 11 **MAX DEPTH:** 39
SPECIES: LMB,SMB,ECP,YP,WP,SF,BBH

ADDITIONAL INFO: no gas motors

ACCESS: No public access

Contact NH Dept of Safety, Marine Patrol Bureau for information regarding waterbody restrictions (603) 293-0091

Public Water Access site (State, Federal, or Road-to-Public-Water)



Canoe/cartop



Shorebank



Ramp



Bathymetric contour (feet)

Bathymetry provided by the NH Department of Environmental Services, Watershed Mgt Bureau

— Town boundary

— Primary Route

— Road or Street

— Trail or other

— Stream or Shoreline

— Surface Water

— Wetland

— Conservation Land

— Cleared

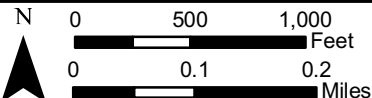
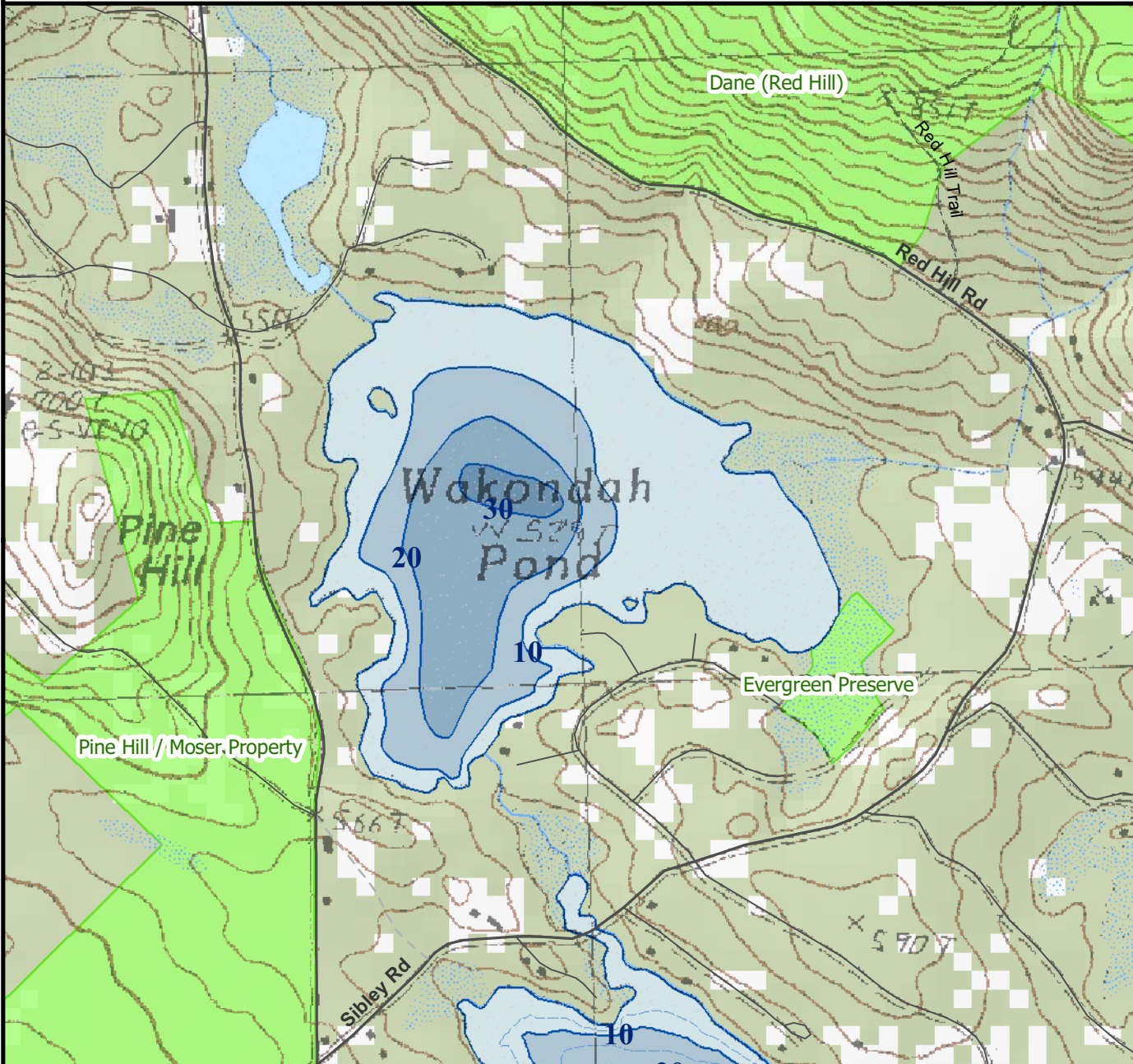
— Forest

— Contour

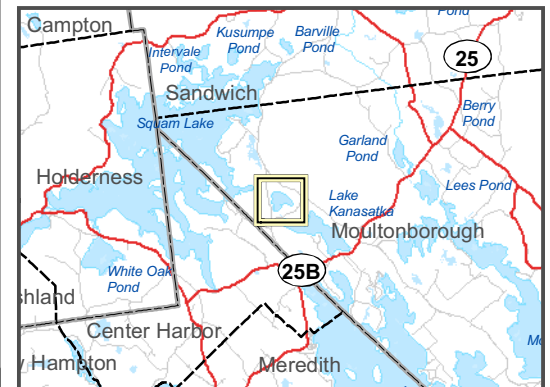
— Building

Source: USGS

Restricted
Access
Conservation



Most data presented on this map represent stock data sets obtained from NH GRANIT, Complex Systems Research Center, UNH. CSRC, NHOEP, NHFGD and the cooperating agencies make no claim as to the validity or reliability or to any implied uses of these data. NOT FOR NAVIGATION.



Directions: Bean Rd